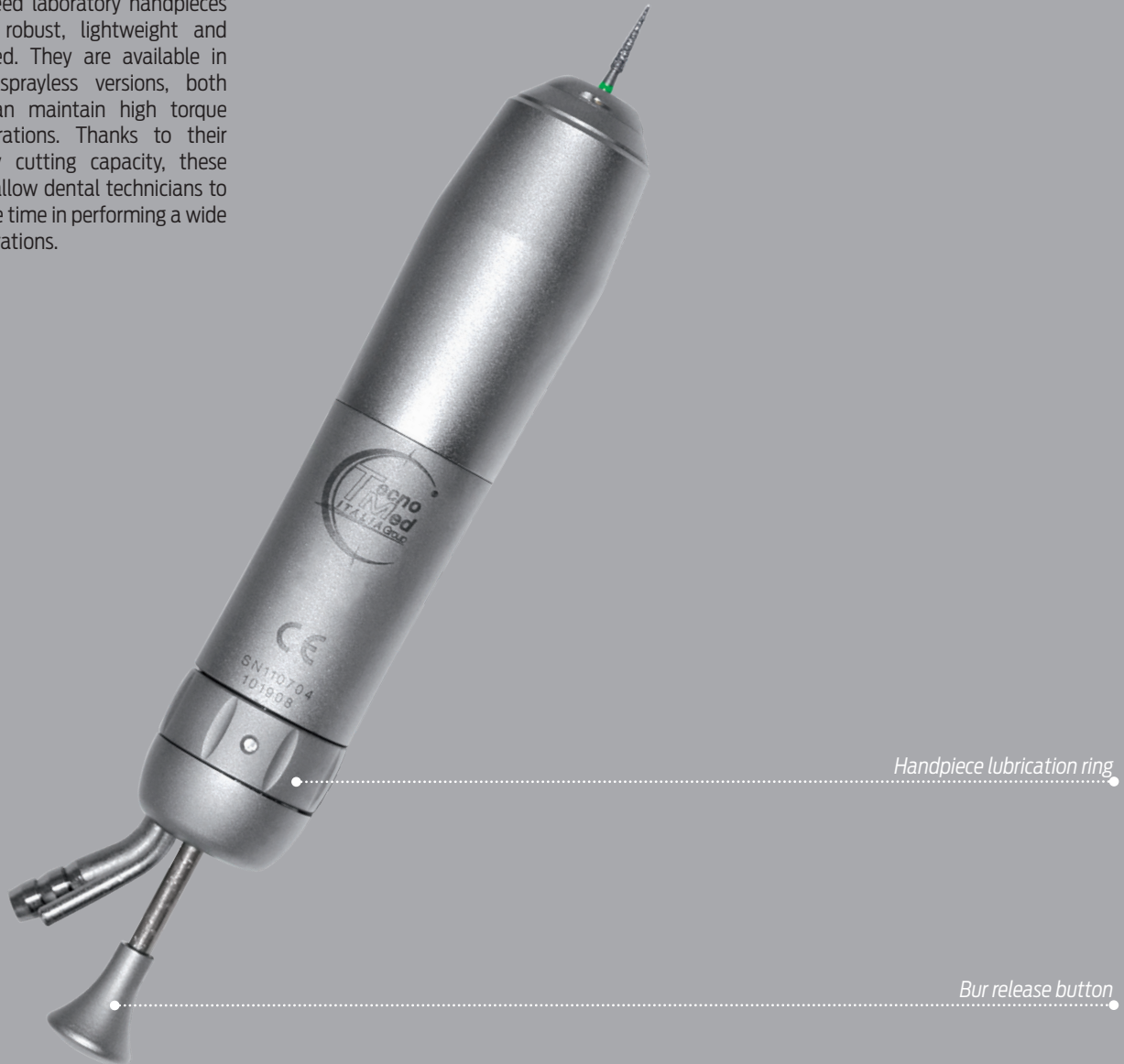


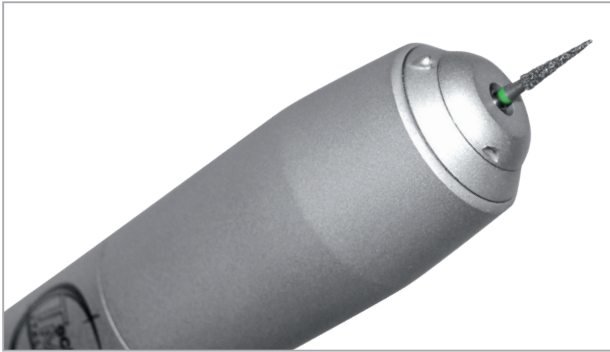
# High speed laboratory handpieces

Our high speed laboratory handpieces are simple, robust, lightweight and well balanced. They are available in spray and sprayless versions, both of which can maintain high torque without vibrations. Thanks to their extraordinary cutting capacity, these handpieces allow dental technicians to save valuable time in performing a wide range of operations.



*Handpiece lubrication ring*

*Bur release button*



These high speed laboratory handpieces are ideal for the precision cutting and finishing of ceramic materials. Perfectly balanced internal parts eliminate all vibration and noise, ensure an extended working life, and make these handpieces extremely efficient. A smooth surface prevents the accumulation of dirt.



The bur is released and locked by a safe and simple mechanism operated by a button at the connector end of the handpiece. This innovative mechanism eliminates the need for fiddly and unhygienic external screws to lock the bur. Rotating the ring at the base of the handpiece gives easy access to the lubrication hole without having to disconnect the air line.

## Comparative data sheet

	Product code HCP01P	Product code HCP22P
Connector	4 x 6 mm tube	4 x 6 / 2 x 4 mm tube
Spray		●
Speed	310000 rpm	310000 rpm
Bur locking force	40 N	40 N
Bur size	1.6 mm	1.6 mm
Bur release	Push	Push
Lubrication required	●	●
Noise level	67 dB	67 dB
Air supply	2.8 bar	2.8 bar
Weight in grams	77	81
Diameter	22 mm	22 mm
Length	125 mm	125 mm
Warranty	12 months	12 months